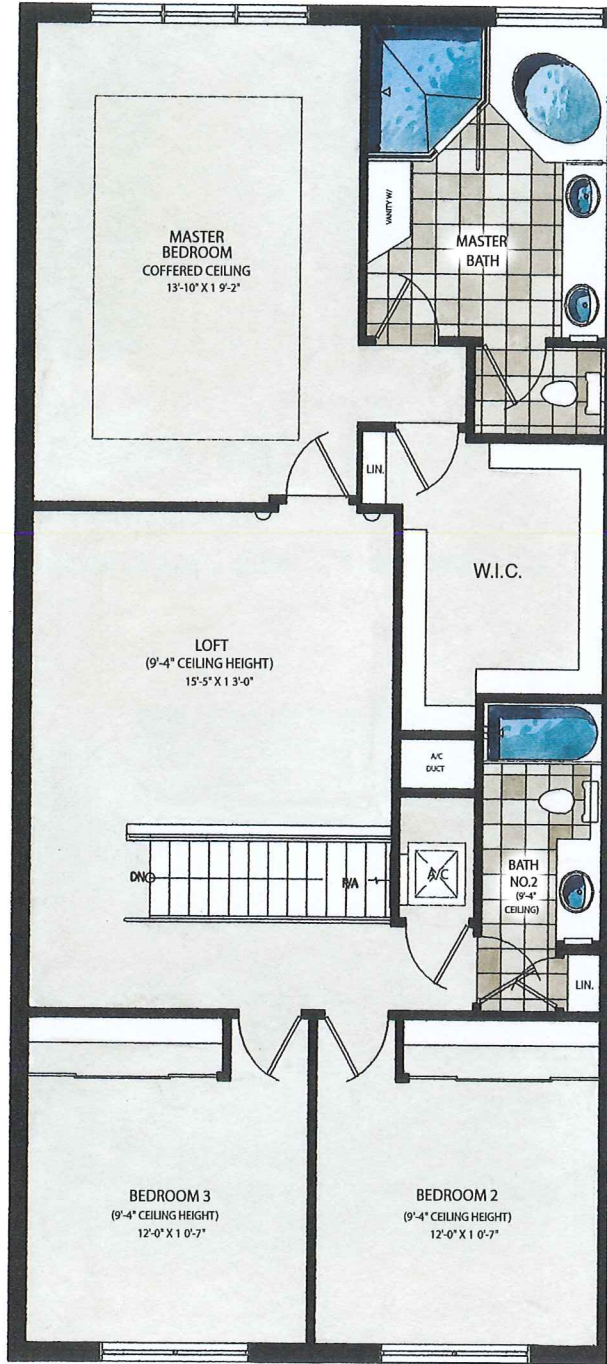


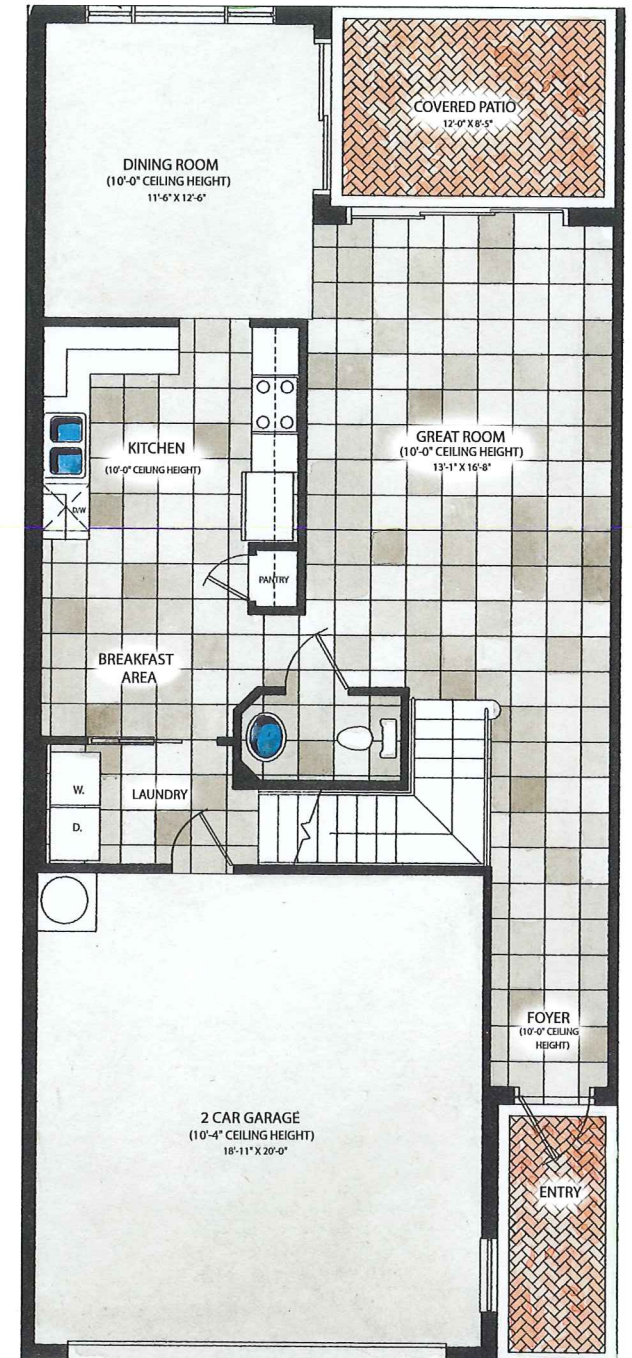
# The Atlantic Interior

3 Bedrooms, Loft, 2 1/2 Baths, Dining Room, Great Room, Covered Patio and Two-Car Garage

405 Garage sq. ft.  
 105 Covered Patio sq. ft.  
 55 Entry sq. ft.  
 2,226 Air Conditioned sq. ft.  
 2,791 Total sq. ft.



Second Floor



First Floor



Preliminary



Prices, features, amenities, specifications, plans, dimensions and designs are subject to change or substitution without notice by Seller. All measurements are approximate. Square footage is measured from the outside of exterior walls. These floorplans may not be to scale and may be the reverse of shown in actual production homes. In production homes, these floorplans and elevations may vary in exact dimensions and details. Illustrations of elevations and floorplans are only artist's depictions. These floorplans and exterior elevations are conceptual and for illustrative purposes only. The landscaping depicted is an artist's conception and does not represent the actual landscaping package in production homes. This does not constitute an offer in states requiring prior registration. Void where prohibited by law. Copyright © 2005. Lennar Corporation. Lennar<sup>SM</sup> and the Lennar<sup>SM</sup> Logo are service marks of Lennar Corporation and/or its subsidiaries. CGC#047307. 05/05.