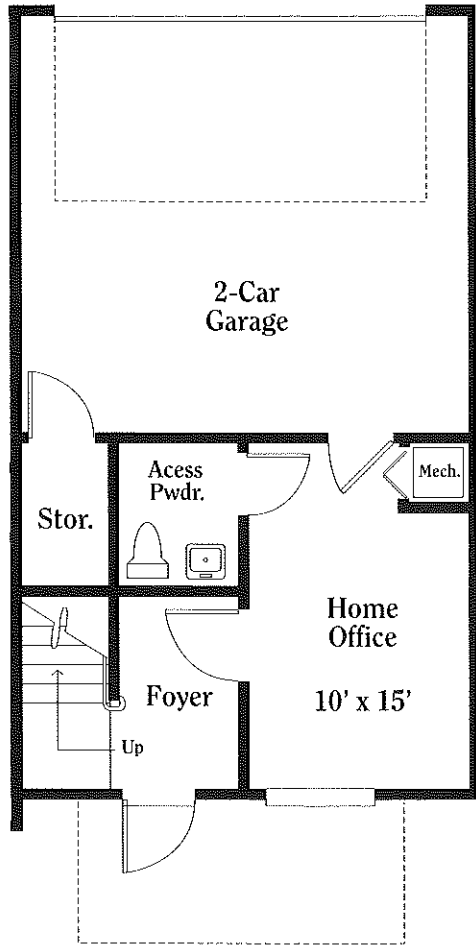




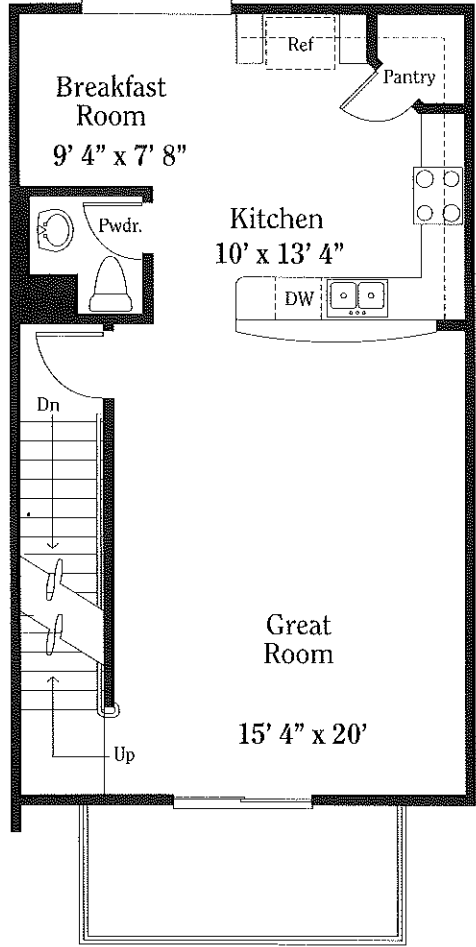
LIVE/WORK C • SUMMERVILLE

SUMMERVILLE SQUARE FOOTAGE

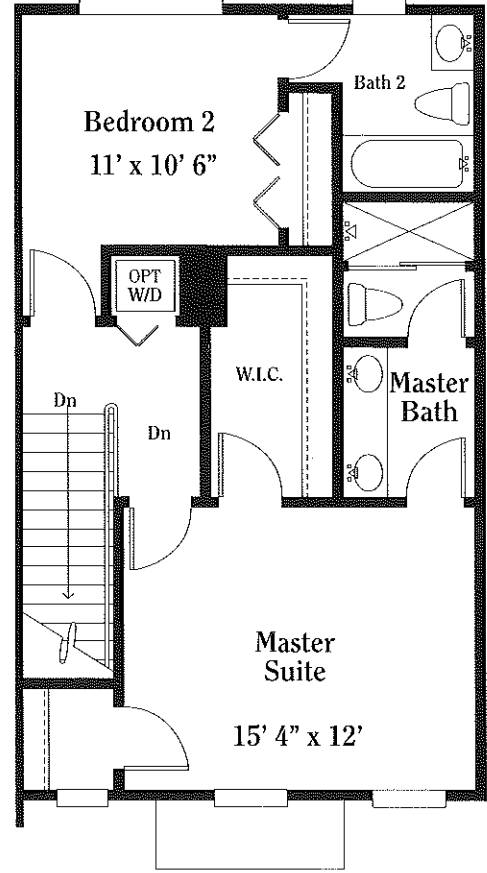
1ST FLOOR	2ND FLOOR
299	645
3RD FLOOR	TOTAL A/C
656	1,600
BALCONY	GARAGE
84	399
TOTAL	2,083



1ST FLOOR



2ND FLOOR



3RD FLOOR



GREENWICH

All dimensions are approximate and are subject to change depending on unit location. Price, rate, features and product subject to change without notice. All housing units in Greenwich must remain affordable for a period of five years, pursuant to Condition 135 of the Abacoa Development of Regional Impact Development Order, which begins when a unit is given a Certificate of Occupancy by the Town of Jupiter. The affordable housing requirement will limit the maximum resale price of a unit for the five-year period. Please consult your sales representative for additional information.





GREENWICH



TOWNHOME & LIVE/WORK EXCEPTIONAL FEATURES

INTERIOR FEATURES

- Plush wall-to-wall carpeting in designer colors
- Ceramic tile in foyer, kitchen, baths and laundry room
- Volume ceiling (per plan)
- Knockdown textured ceilings
- Hi-hat lighting per electrical plan
- Raised-panel interior doors
- Elegant Colonial casing and baseboards (per plan)
- Lever-style door hardware
- Laundry room includes hook-up for optional washer and dryer
- Finished painted 2-car garage
- Full fire-sprinkled units

LUXURIOUS BATHS

- Moen® faucets
- Cultured marble vanity tops with integral sinks
- Ceramic tile floors
- Full-width oversized mirrors
- Ceramic tile shower with glass enclosure in master bath

GOURMET KITCHEN

- European-style cabinetry
- Moen® faucets
- G.E.® White appliance package (refrigerator, range, hood and dishwasher)
- 1/2 hp garbage disposal
- Recessed lighting
- Ceramic tile in choice of decorator colors (per plan)

ELECTRICAL FEATURES

- Category-5 telephone pre-wire in kitchen, all bedrooms and library
- Pre-wired for fans
- Designer switches
- Alarm system
- Minimum 150 amp electrical service
- Pre-wired for cable in all bedrooms and great room
- High-speed internet access capabilities through local phone service

EXTERIOR FEATURES

- CBS construction
- Balconies (per plan)

- Dimensional shingle roof
- Simulated ship lap siding and textured stucco finish with smooth-finish bands (per plan)
- Professionally coordinated exterior color schemes
- Cedar fascia
- Fully sodded home site with professionally designed landscape package
- Master automatic sprinkler system
- Coach lights (per plan)
- Exterior hose bibs (per plan)
- Exterior GFI outlets (per plan)
- Gutters
- Storm panels for all window exposures

COMMUNITY FEATURES

- Prestigious Jupiter location
- Excellent Jupiter schools
- Community pool and cabana
- Walking distance to dining and shopping
- Professionally designed landscaping

- Underground utilities, municipal water and sewer service
- Cable television service included in HOA fees

MONEY-SAVING ENERGY FEATURES

- 40-gallon electric water heater
- High-efficiency air conditioning system
- Raised-panel steel-insulated front door with deadbolt
- R-30 batten ceiling insulation

WARRANTY PROTECTION

- Greenwich Protection Plan with 2-10 year limited warranty
- New Urban Workplace, LLC "Customer Commitment Service Team"



All dimensions are approximate and are subject to change depending on unit location. Price, rate, features and product subject to change without notice. All housing units in Greenwich must remain affordable for a period of five years, pursuant to Condition 135 of the Abacoa Development of Regional Impact Development Order, which begins when a unit is given a Certificate of Occupancy by the Town of Jupiter. The affordable housing requirement will limit the maximum resale price of a unit for the five-year period. Please consult your sales representative for additional information.

New Urban  Communities

www.newurbancommunities.com 561-776-9484

