

LISMORE

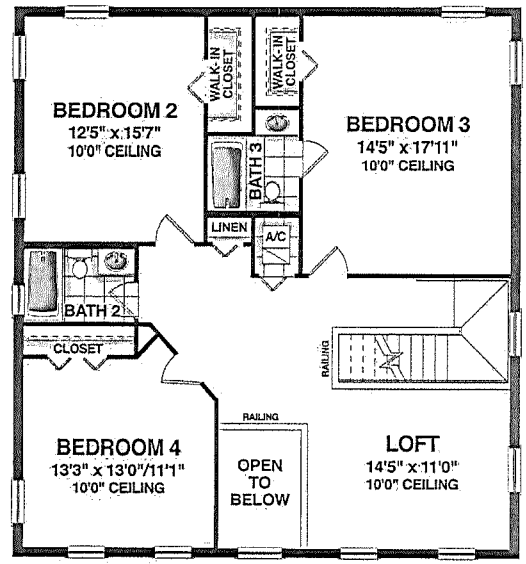
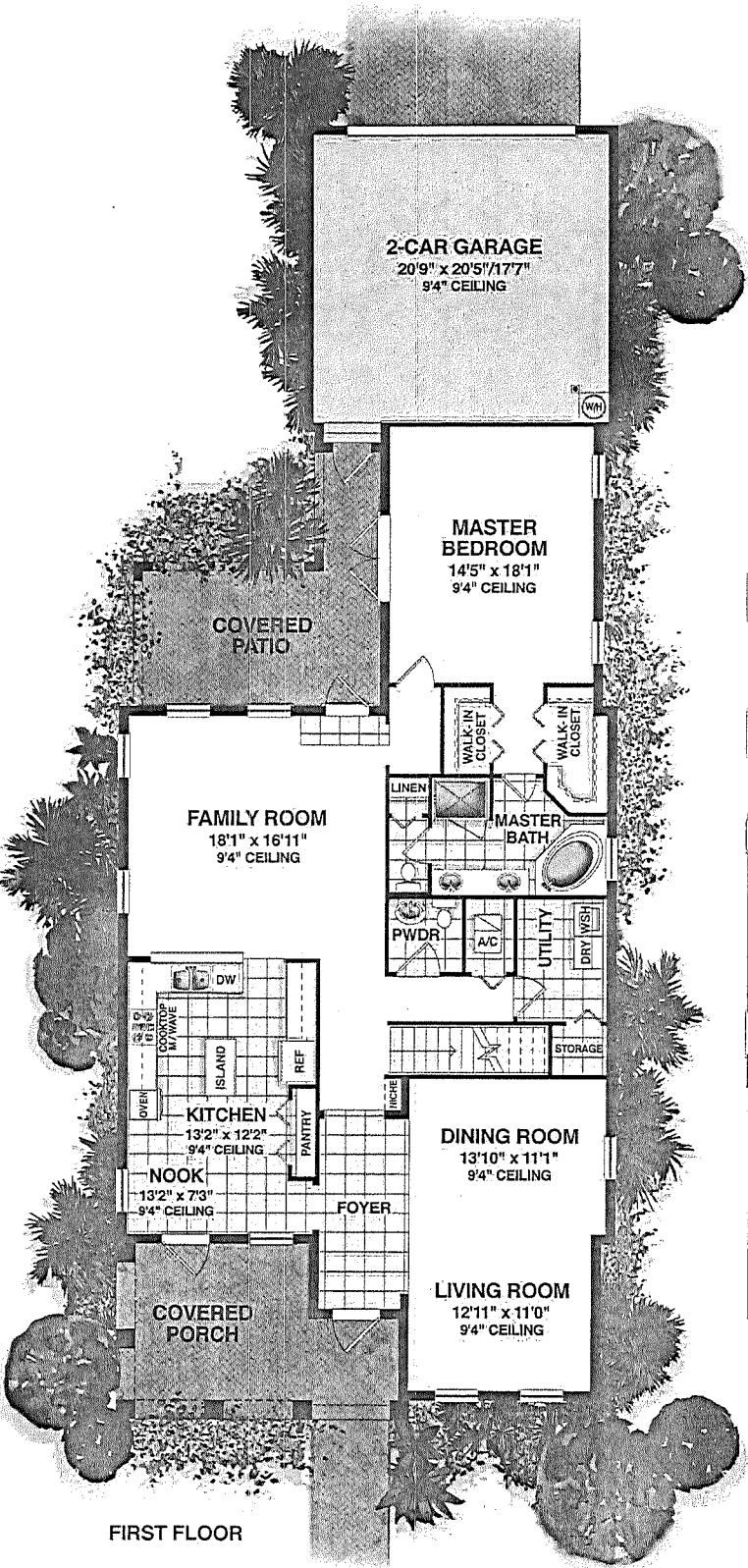
4 BEDROOMS, 3½ BATHROOMS, FAMILY ROOM, LOFT, BREAKFAST NOOK,
COVERED PORCH, COVERED PATIO, 2-CAR GARAGE

Living Area
 1st Floor 1,832 sq. ft.
 2nd Floor 1,211 sq. ft.

 Total Living Area . . . 3,043 sq. ft.

Covered Porch 200 sq. ft.
 Covered Patio 219 sq. ft.
 Garage 467 sq. ft.

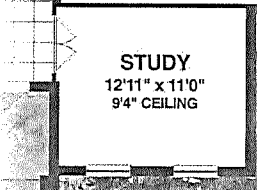
 Total 3,929 sq. ft.



SECOND FLOOR

Optional Study,
 Replaces
 Living Room

13'10" x 11'1"
 9'4" CEILING



STUDY
 12'11" x 11'0"
 9'4" CEILING

FIRST FLOOR