

The Sonoma

COCONUT KEY/
SAN MARITA

Homes by Jones

Features

EXTERIOR FEATURES

- CBS construction
- Double-roll roof tile
- Driveway and walkways of interlocking brick pavers
- One light-stained double French doors at front entry
- Generous custom-designed landscape package
- Gutters around entire house with underground drainage

INTERIOR FEATURES

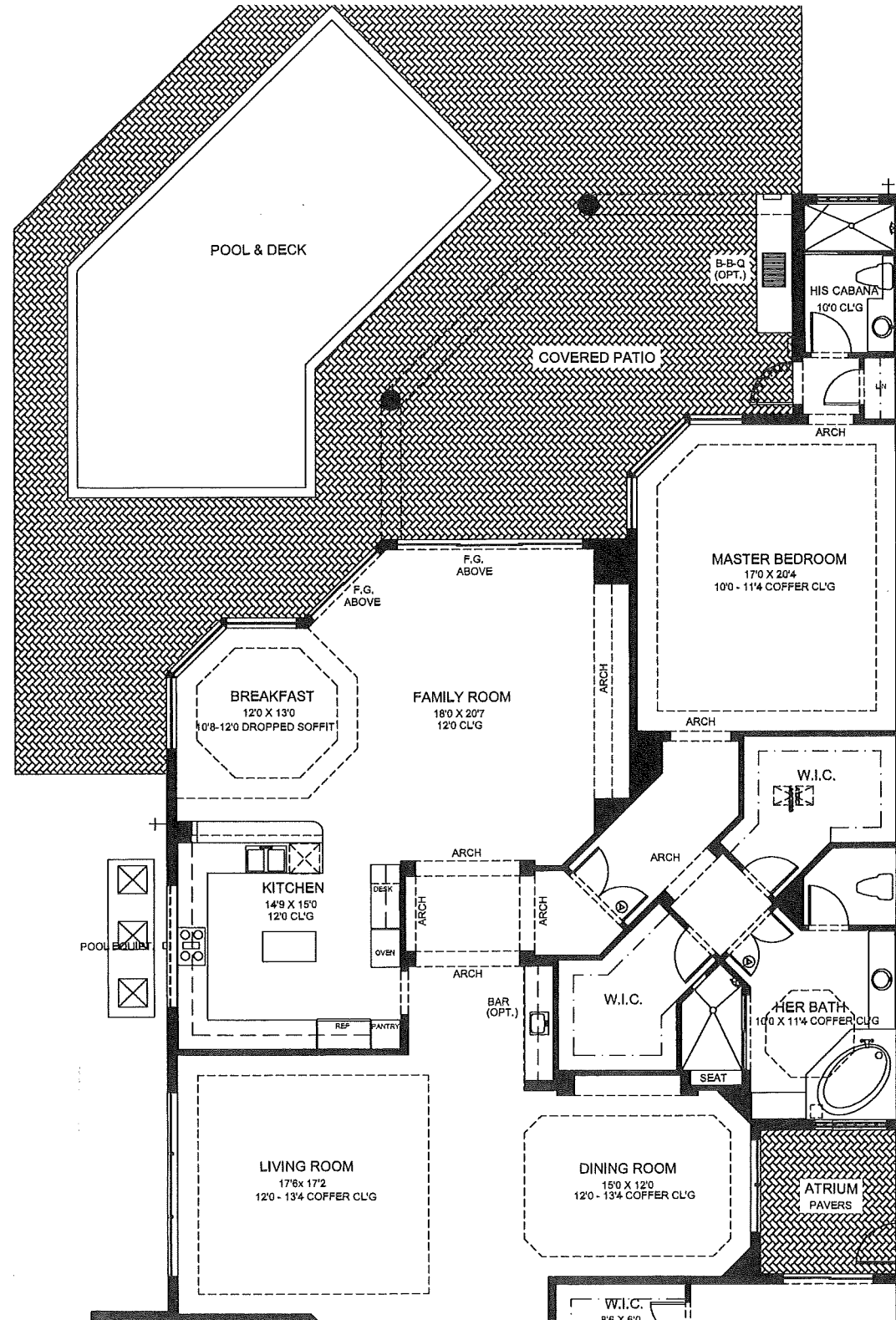
- 18" Ceramic tile floor in all main areas
- Coffered ceilings in foyer, living, dining, breakfast, master, and master bath
- Smooth walls with high knockdown ceilings
- Glass block (as per model)
- Two panel 1³/₄" solid interior doors
- Gas hot water heater with looped and recirculating system
- 8' high sliding glass doors (as per model)

KITCHEN AREA

- Choice of European-style cabinets with paneled doors
- Choice of granite countertops
- Kitchenaid appliance package
- 42" built-in refrigerator with wood panel door
- 30" combo – micro/oven, 36" gas cooktop
- Pantry cabinet with roll-out shelves

MASTER SUITE AND BATHROOM

- Choice of European-style cabinets with paneled doors
- Choice of pile stain-resistant carpeting



Oversized his-and-her closets with stack of drawers in each
 18" x 18" Saturnia marble floors, tub decks, and shower walls
 Cultured marble vanity tops with bullnose edge
 One-piece water closet(s)

SECONDARY BEDROOMS

Choice of pile stain-resistant carpeting
 Abundant closet space with wire shelving

SECONDARY BATHROOMS

Choice of European-style cabinets with paneled doors
 Cultured marble vanity tops with integral bowl
 Ceramic tile floors and walls

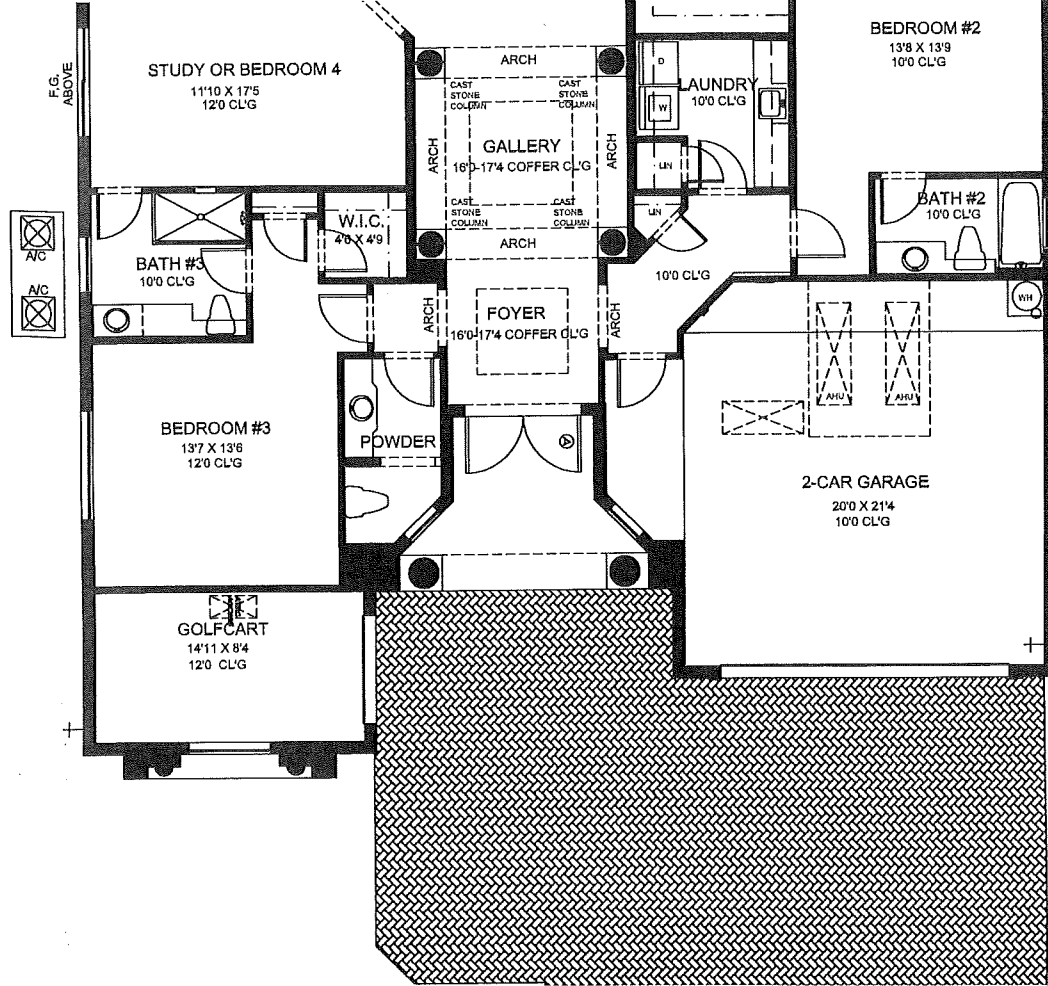
OTHER FEATURES

High-efficiency, multizoned air conditioning
 High hats and paddle fans (as per model)
 Garage coach lights, flood lights, and undercounter lights
 R-30 ceiling insulation
 Prewire for cable TV and phone
 Golf cart garage with charger outlet

OPTIONS

Second story
 Cabana bath
 Patio infrared barbecue package
 Glass kitchen cabinet doors
 Crown molding
 Whirlpool for master tub
 Bidet
 Screen enclosures
 Spa or waterfalls

In a continuing effort of improvement, specifications are subject to change.



The Sonoma

Air-Conditioned Living Area.....	3,980 sq. ft.
Garage.....	646 sq. ft.
Covered Entry.....	110 sq. ft.
Covered Patio	450 sq. ft.
TOTAL.....	5,186 sq. ft.