

# The Belvedere

COCONUT KEY/  
SAN MARITA  
*Homes by Jones*

## Features

### EXTERIOR FEATURES

- CBS construction
- Double-roll roof tile
- Driveway and walkways of interlocking brick pavers
- One light-stained double French doors at front entry
- Generous custom-designed landscape package
- Gutters around entire house with underground drainage

### INTERIOR FEATURES

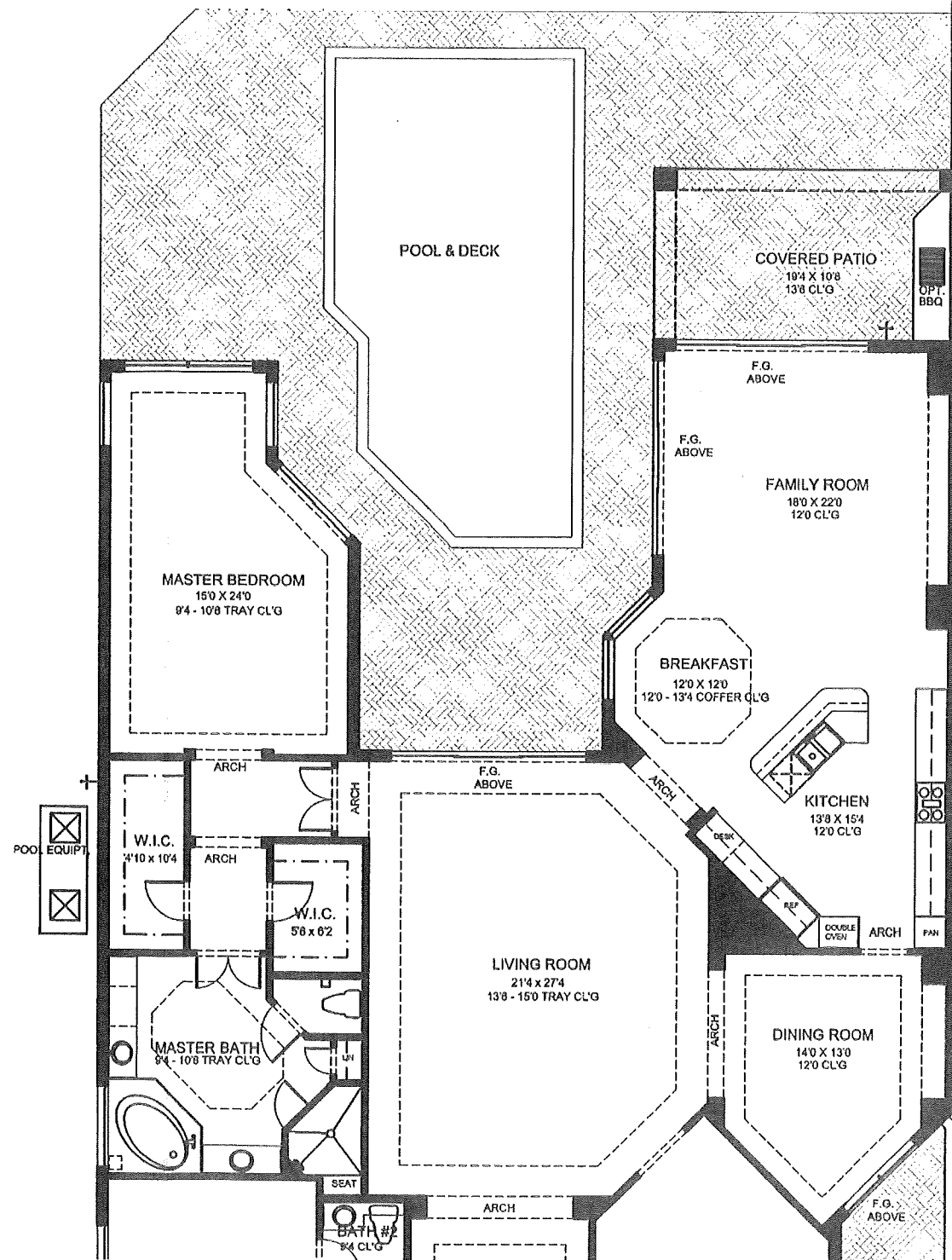
- 18" Ceramic tile floor in all main areas
- Coffered ceilings in foyer, living, dining, breakfast, master, and master bath
- Smooth walls with high knockdown ceilings
- Glass block (as per model)
- Two panel 1 3/4" solid wood interior doors
- Gas hot water heater with looped and recirculating system
- 8' high sliding glass doors (as per model)

### KITCHEN AREA

- Choice of European-style cabinets with paneled doors
- Choice of granite or Corian countertops
- Kitchenaid appliance package
- 42" built-in refrigerator with wood panel door
- 30" combo - micro/oven, 36" gas cooktop
- Pantry cabinet with roll-out shelves

### MASTER SUITE AND BATHROOM

- Choice of European-style cabinets with paneled doors
- Choice of pile or Berber stain-resistant carpeting



Oversized his-and-her closets with stack of drawers in each  
 12" x 12" Saturnia marble floors, tub decks, and shower walls  
 Marble vanity tops with bullnose edge  
 One-piece water closet(s)

**SECONDARY BEDROOMS**

Choice of pile or Berber stain-resistant carpeting  
 Abundant closet space with wire shelving

**SECONDARY BATHROOMS**

Choice of European-style cabinets with paneled doors  
 Cultured marble vanity tops with integral bowl  
 Ceramic tile floors and walls

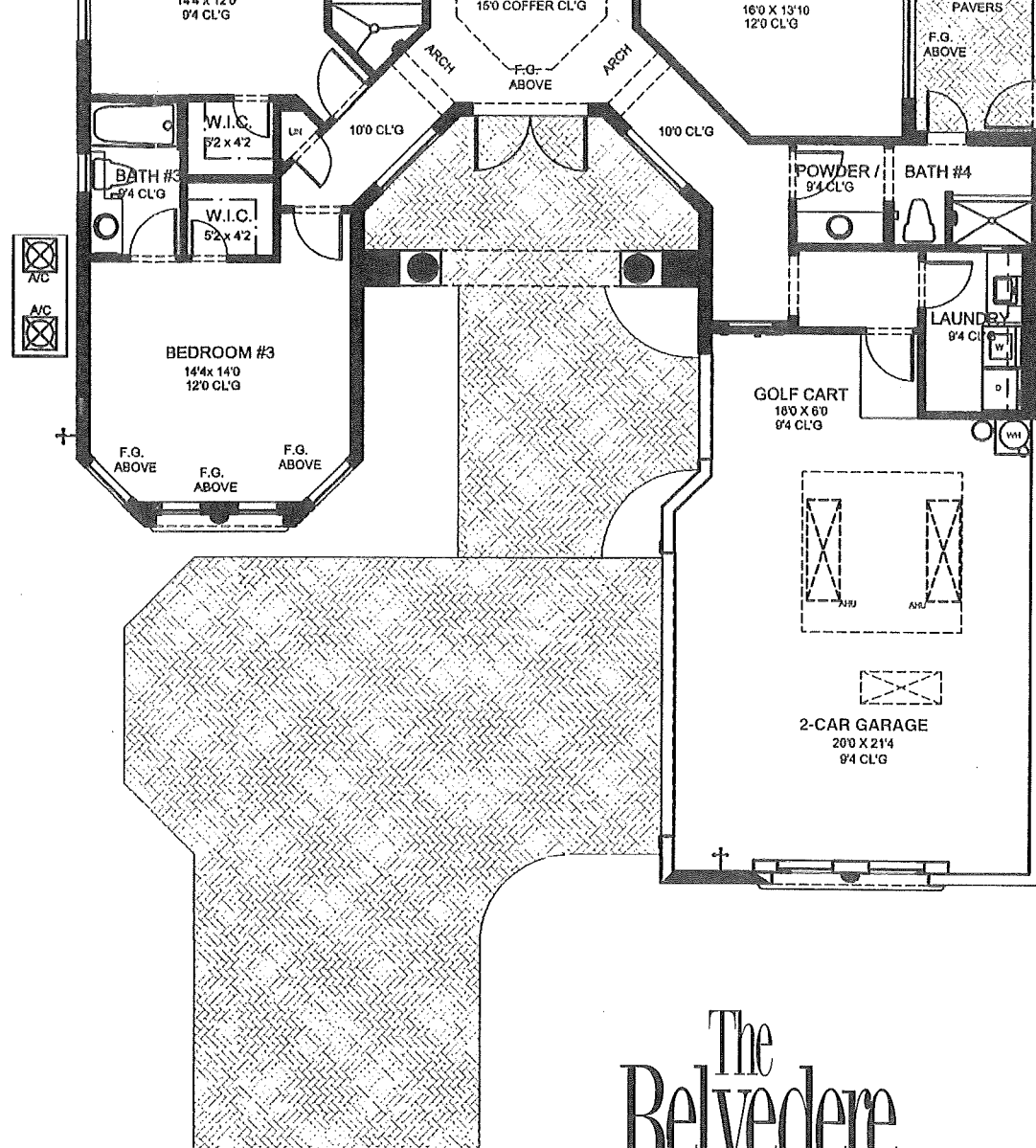
**OTHER FEATURES**

High-efficiency, multizoned air conditioning  
 High hats and paddle fans (as per model)  
 Garage coach lights, flood lights, and undercounter lights  
 R-30 ceiling insulation  
 Prewire for cable TV and phone  
 Golf cart garage with charger outlet

**OPTIONS**

Second story  
 Cabana bath (if lot allows)  
 Patio infrared barbecue package  
 Glass kitchen cabinet doors  
 Crown molding  
 Whirlpool for master tub  
 Bidet  
 Screen enclosures  
 Spa or waterfalls

*In a continuing effort of improvement, specifications are subject to change.*



# The Belvedere

Air-Conditioned Living Area.....	3,588 sq. ft.
Garage.....	610 sq. ft.
Covered Entry .....	152 sq. ft.
Covered Patio .....	206 sq. ft.
<b>TOTAL.....</b>	<b>4,556 sq. ft.</b>