

The St. Thomas

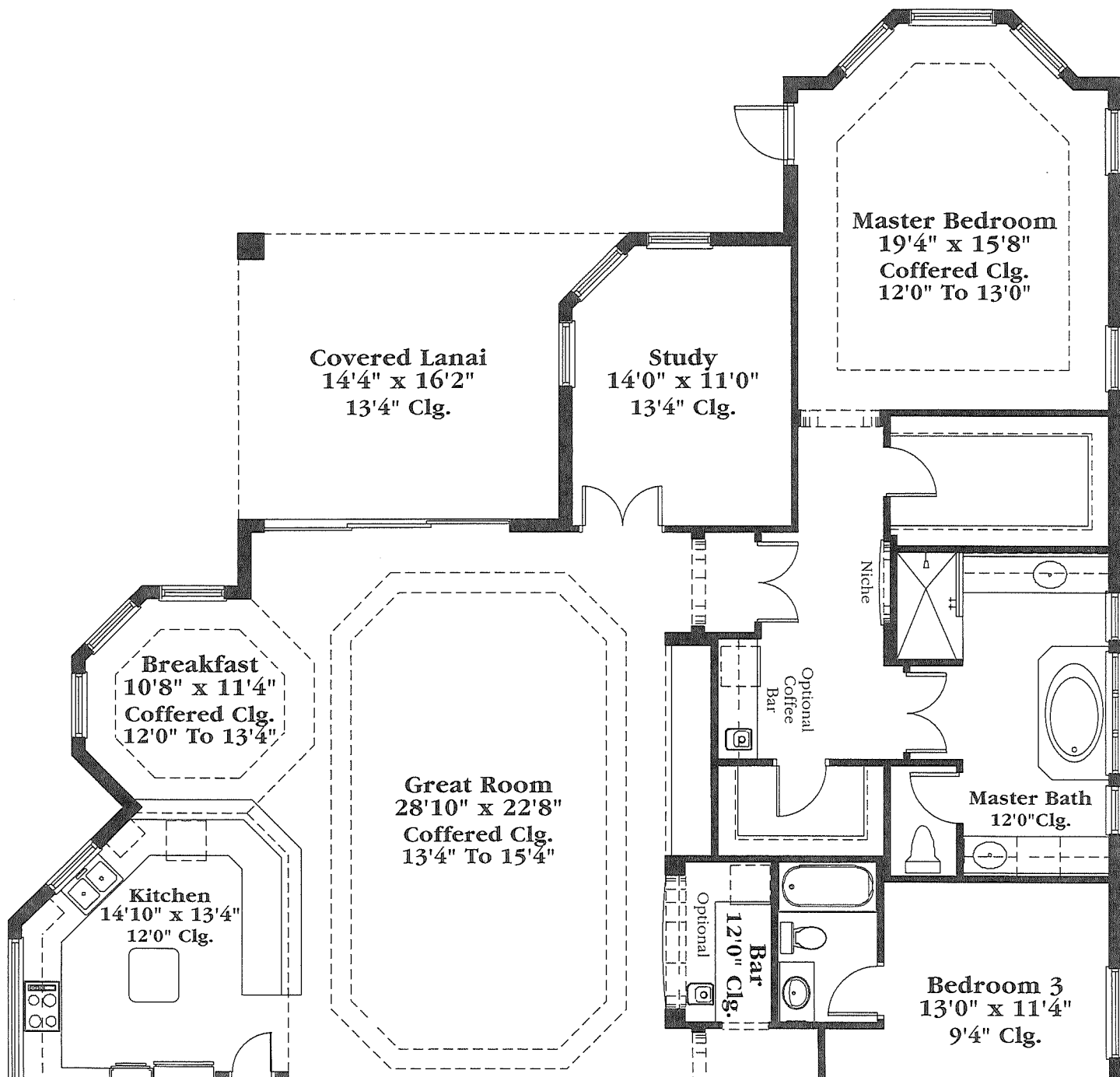
ARBOR CHASE
Arbor Chase Estate
Luxury Homes, Inc.

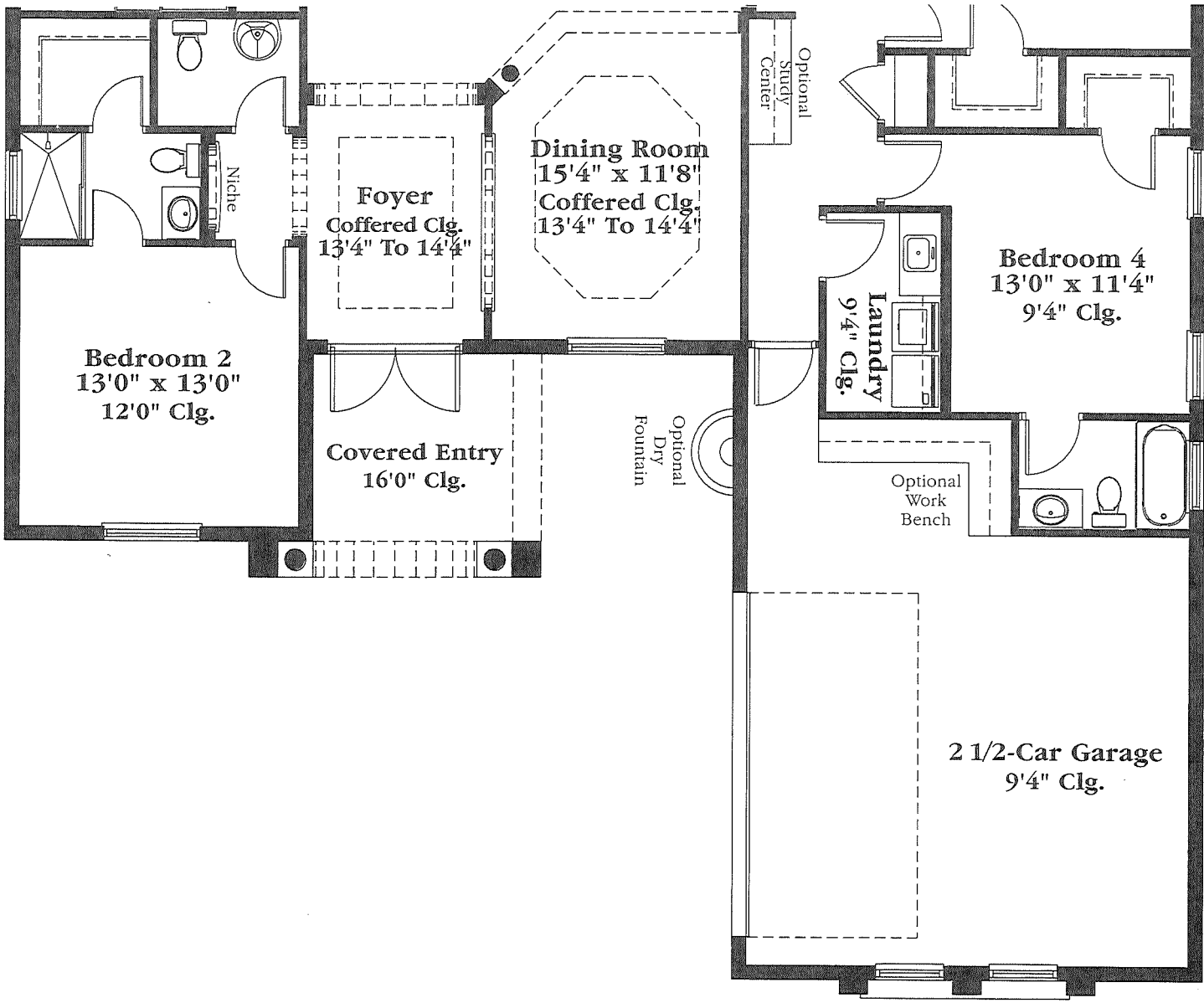
Superior quality, impeccable attention to detail, and personalized service are Victor Posner's business trademarks. They have made him one of the most successful entrepreneurs of the 20th century and his newest venture, Arbor Chase Estate Luxury Homes, Inc., is no exception. He has created a "team" whose expertise in the real estate and construction fields will continue the unprecedented success of the premier residential community, BallenIsles in Palm Beach County.

Arbor Chase at BallenIsles is a secluded enclave of 23 full-sized lots. An exclusive common area in each of the rear yards allows for a park-like atmosphere, which provides for the ultimate in privacy.

Luxurious floor plans make the most of the surroundings. Spacious interiors create a comfortable gathering place for both family and friends. The designs embody the unique ability to offer both the functional casualness for daily living, as well as the traditional elegance of a country club community.

Value engineering of the floor plans has enabled Arbor Chase Estate Luxury Homes, Inc. to offer one of the most exceptional values in BallenIsles. Superior workmanship and quality materials create a home in keeping with the high standards associated with Victor Posner Enterprises.





The St. Thomas

Air-Conditioned Living Area	3,238 sq. ft.
Covered Lanai	238 sq. ft.
Garage	537 sq. ft.
Covered Entry	110 sq. ft.
TOTAL	4,123 SQ. FT.

Dimensions are approximate.